

Oklahoma City Utilities: Water for a City on the Rise



Oklahoma City Water Utilities Trust

Water Service to Central Oklahoma

- Serves 1.4 million people
- Oklahoma City and 18 communities
- Five Trustees -
 - Two elected, City Manager,
and two appointed

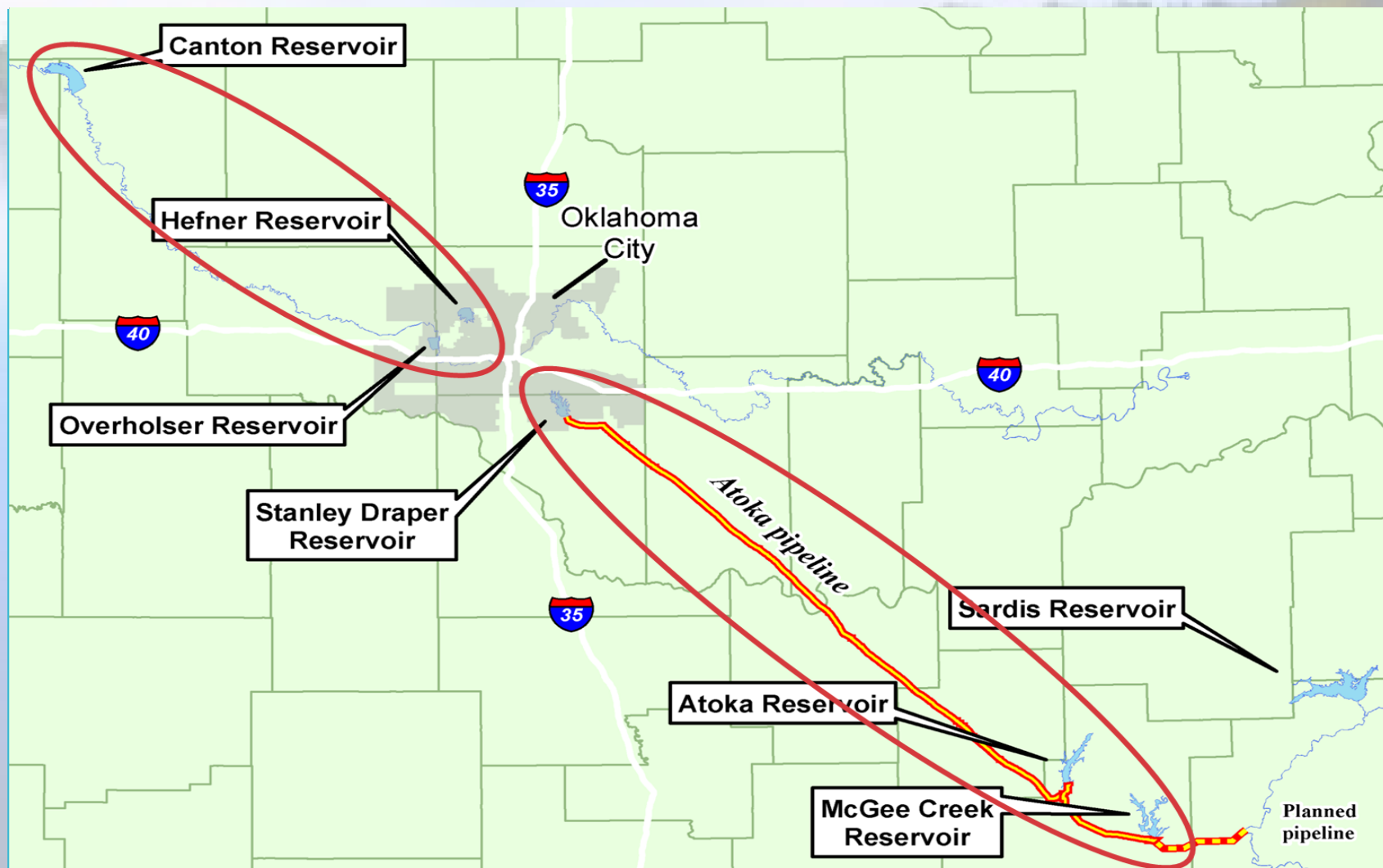


Infrastructure

- OKC is the 3rd largest city in the US (land mass)
- Over 7000 miles of pipe
- Two water treatment plants
- Four wastewater treatment plants



Water Supply



Oklahoma City's Water History

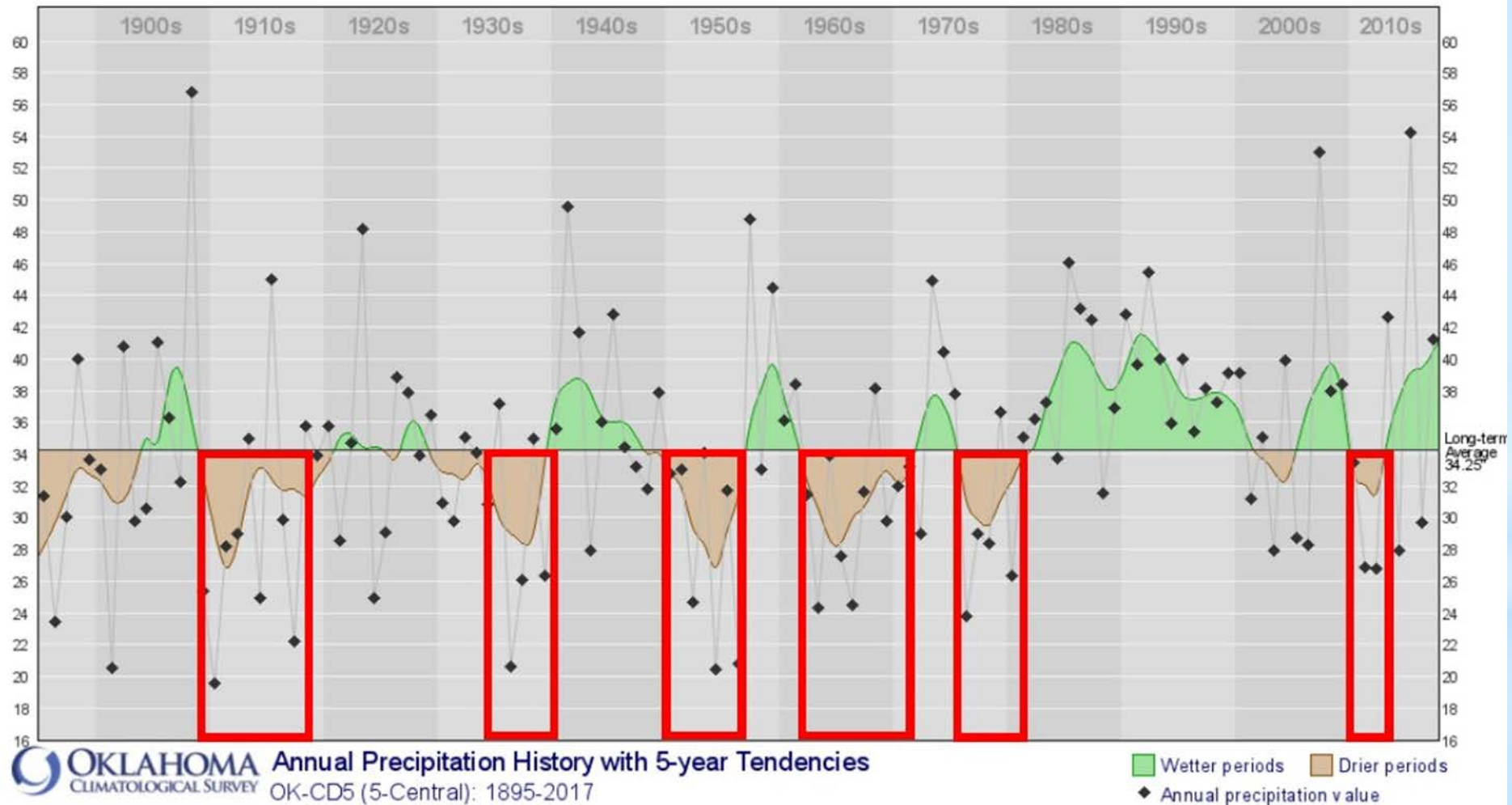
Land Run: April 22, 1889

OKC Population: 10,000 within 2 days

Water sold by the bucket



Oklahoma's Droughts



First Water Supply Reservoir

Overholser 1917

- North Canadian River next water supply
- Adequate water supply for 50 years
- Population - 65,000

“Now we have come to the point where we must have an adequate water supply and settle for all time the water problem which has faced Oklahoma City for several years...” ~ Mayor Edward Overholser



Expansion of North Canadian Supply

Hefner 1947

- Significant drought in the 30's
- Recommended by 1939 master plan
- Population - 200,000



NW Oklahoma City Water Supply Map



SE Oklahoma Water Supply - Phase 1

Atoka 1959

- Drought of Record
- 1954 Master Plan
- \$61 million project
- Constructed lakes at same time, 100 miles apart
- Population - 324,000



Draper 1963



Atoka Pipeline

Connects Atoka to Lake Draper

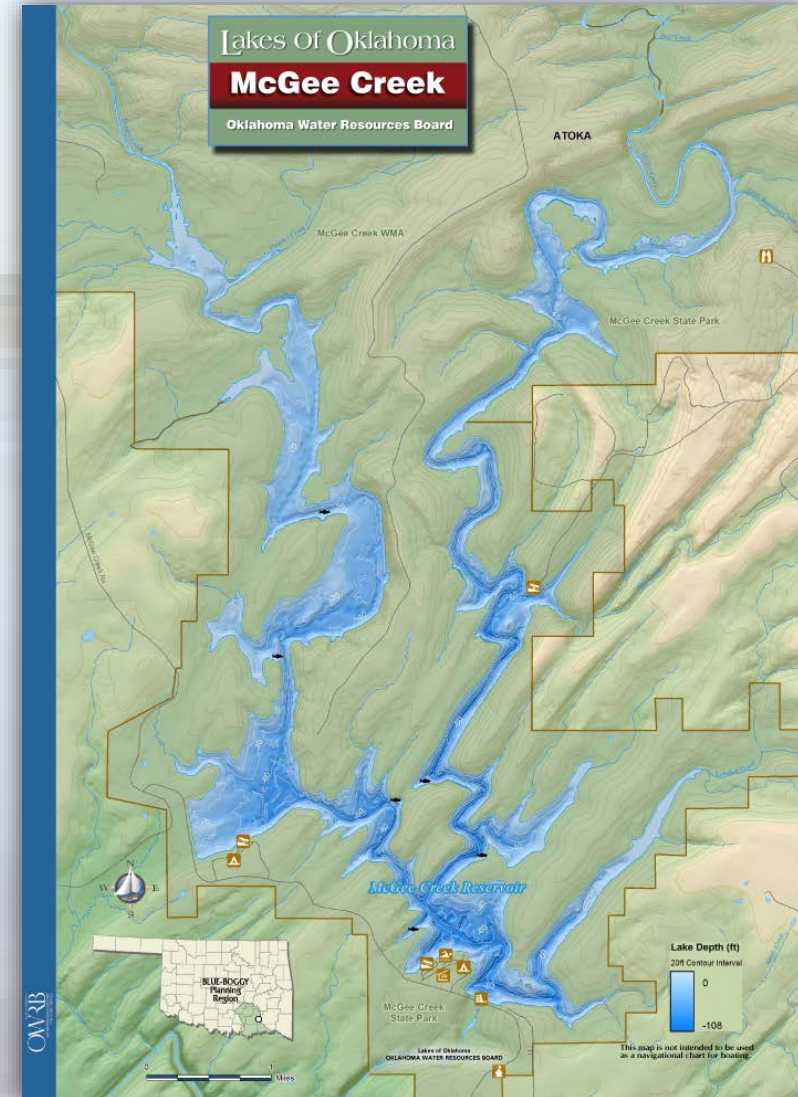
- Completed in 1961
- 100 Miles in length
- 60" In Diameter



SE Oklahoma Water Supply - Phase 2

McGee Creek Reservoir 1988

- Built by Bureau of Reclamation
- Water supply for Oklahoma City and others
- Population - 450,000



Improving North Canadian Reliability

Canton Lake

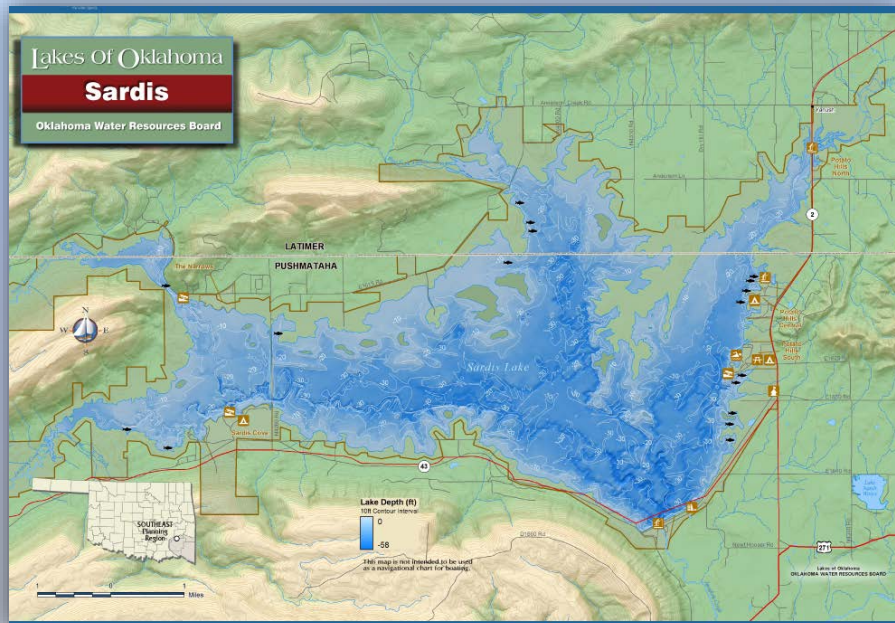
- Constructed by USACE 1948
- Storage rights purchased in 1991
- Enhances supply resiliency



SE Oklahoma Water Supply - Phase 3

Sardis Lake

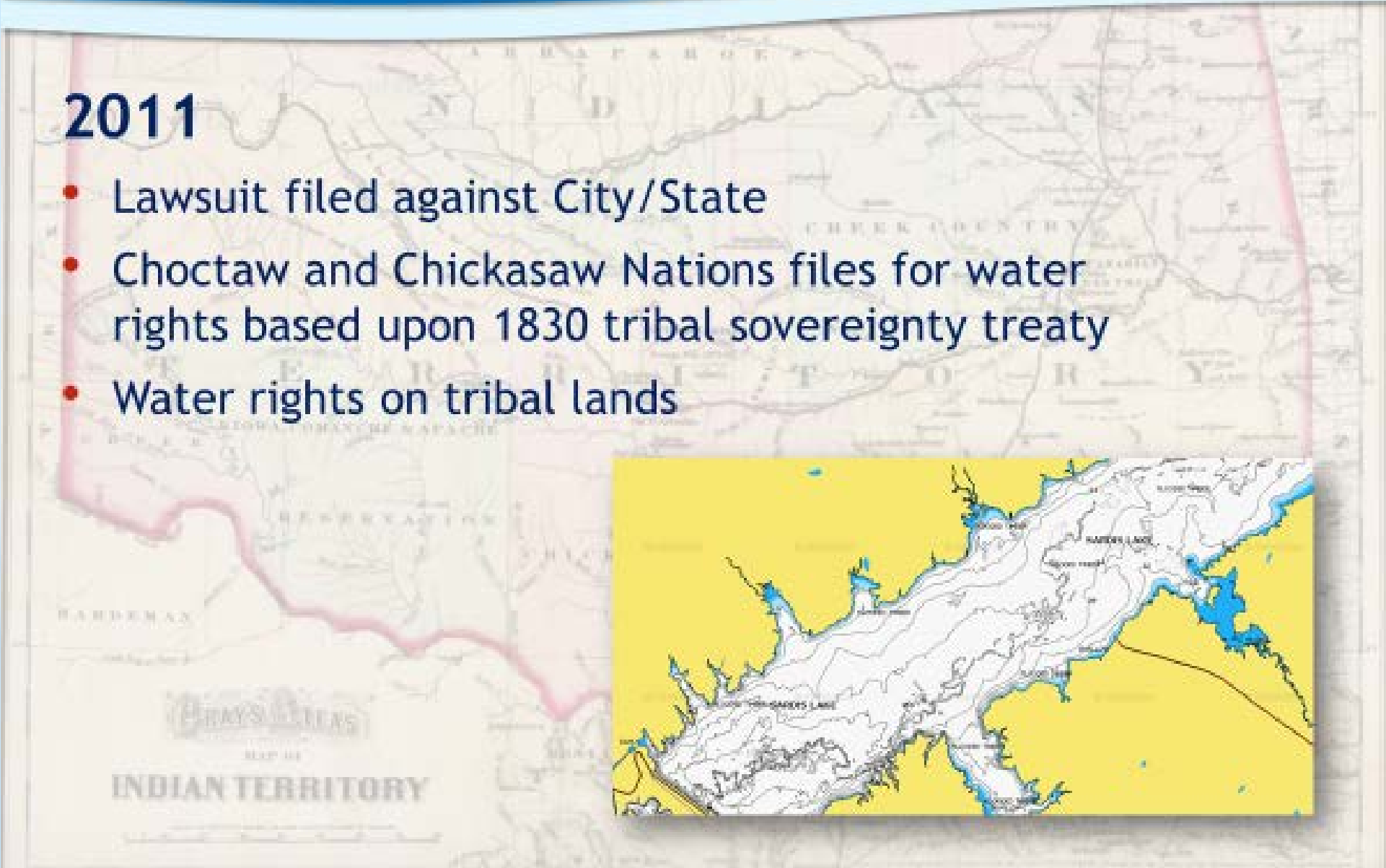
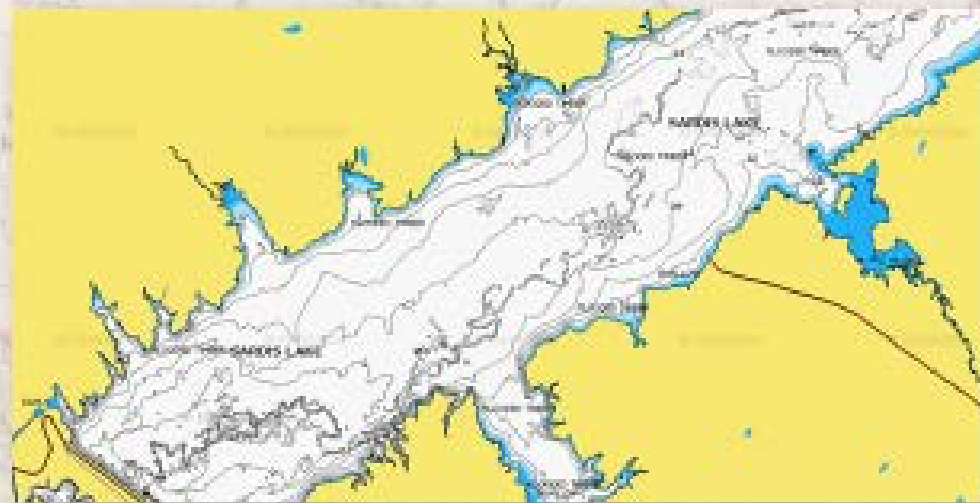
- Constructed by USACE 1983
- Flood control and water supply
- Water Supply Through 2060



OKC Purchased
Storage Rights 2010

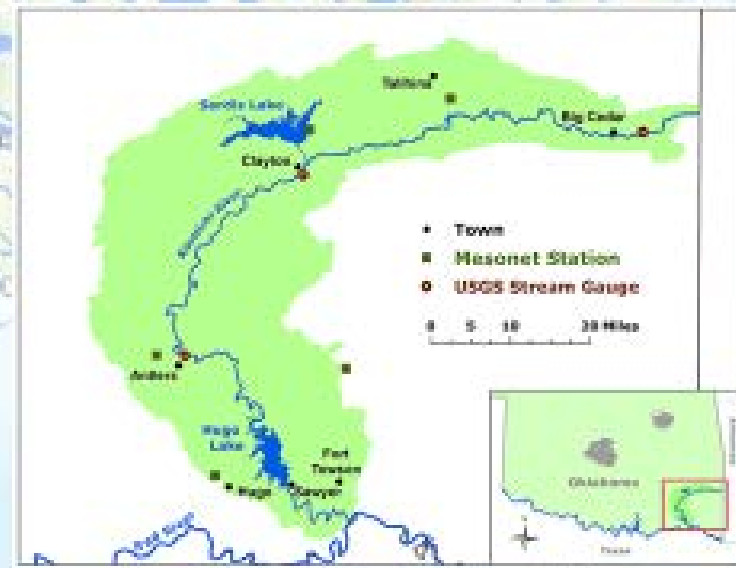
2011

- Lawsuit filed against City/State
- Choctaw and Chickasaw Nations files for water rights based upon 1830 tribal sovereignty treaty
- Water rights on tribal lands

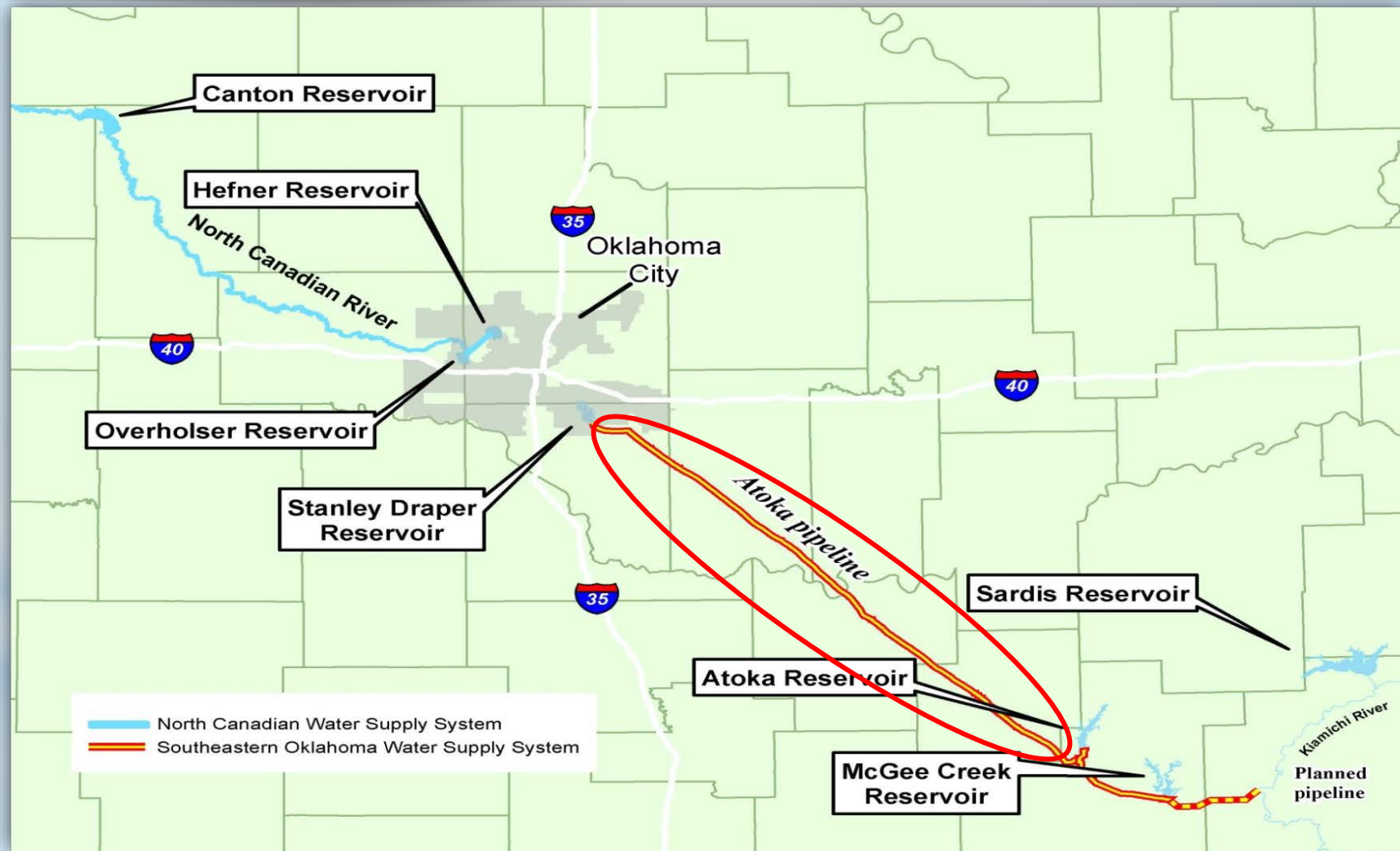


Water Unity OK

- Agreement reached in 2016
- Legislation signed by President
- Protects existing water rights
- Set aside for future use
- Implements lake level management and minimum instream flow
- Reserves water for users along pipeline



Second Atoka Pipeline



2nd Atoka Pipeline

- 72-Inch pipeline from Atoka to Draper
- Increases capacity to pump all existing water rights
- \$900 million



Future Kiamichi Supply System

- New pipeline approximately 31 miles
- New intake structure and pump station
- \$300 million program cost
- Complete around 2035



Natural Challenges



Lake Atoka Spillway

- Over 35 inches of rain during May 2015
- Peak spillway flow over 400 million gallons per hour



Lake Atoka Spillway

- Damage caused by May 2015 rain
- Repair cost nearly \$35 million
- Completed in 2021



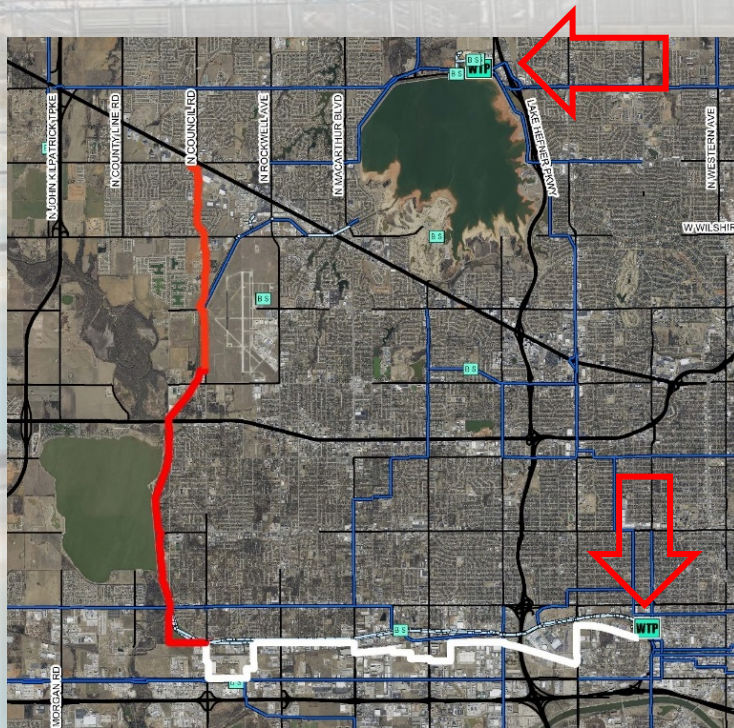
EF 5 Tornado

Tornado
approaching the
Draper Water
Treatment Facility
in 2013



Hefner-Draper Interconnect

- Provide reliable, resilient water service
- Assure continuity of service to all of OKC

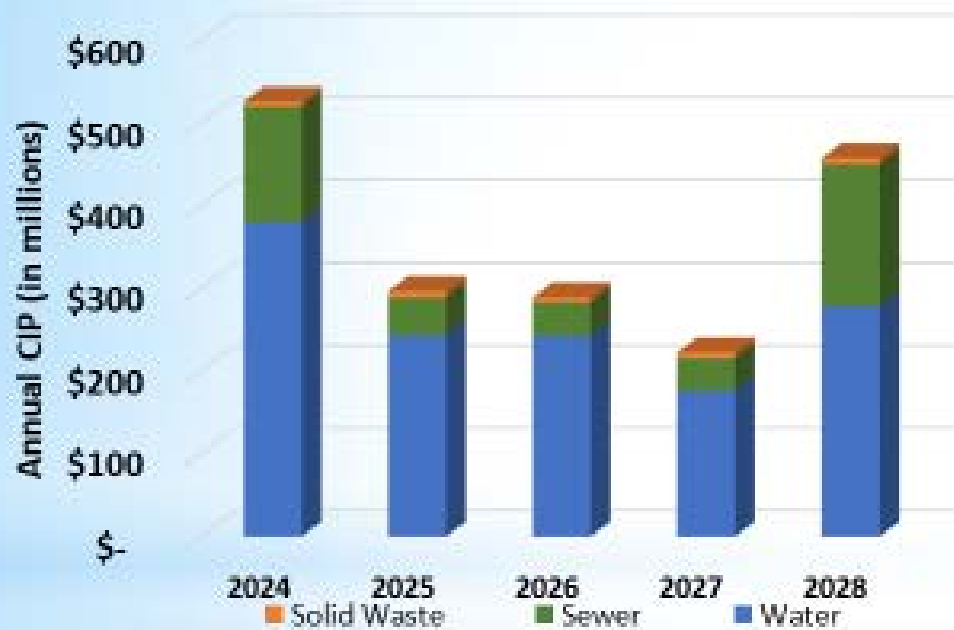


Facility and Infrastructure

- Water treatment plant improvements
- Standby generators
- Replacing aging water pipelines
- Automatic pressure regulating system



2024-2028 CIP \$1.79 Billion



Financial Management

- Long-term financial planning
- Cost-of-Service studies
- Incremental annual adjustments
- Maintain highest Bond Ratings from S&P and Moody's
- Maintain appropriate reserves
- Debt Management Strategies

Financial Challenges

- Balancing affordability and sustainability
- Increasing O&M and capital costs
- Financing capacity limitations

Financial Funding Initiatives

- Solutions to increase short-term financing capacity underway
- Increase Letter of Credit limit from \$275 million to \$350 million
- Separate short-term financing for generational projects
- Cost-of-Service study update underway
- Pursue Grant funding opportunities (SRF loans, IIJA, EPA, ARPA, FEMA)

Questions???

A Century of Service: Overholser Dam 1917-2019

A sepia-toned photograph of the Overholser Dam. The dam features a long spillway with multiple bays where water is cascading over. To the right, there is a large, multi-story concrete building with several windows and arched openings on the lower level. The sky is clear and light-colored, suggesting a bright day. The overall tone is historical and commemorative.