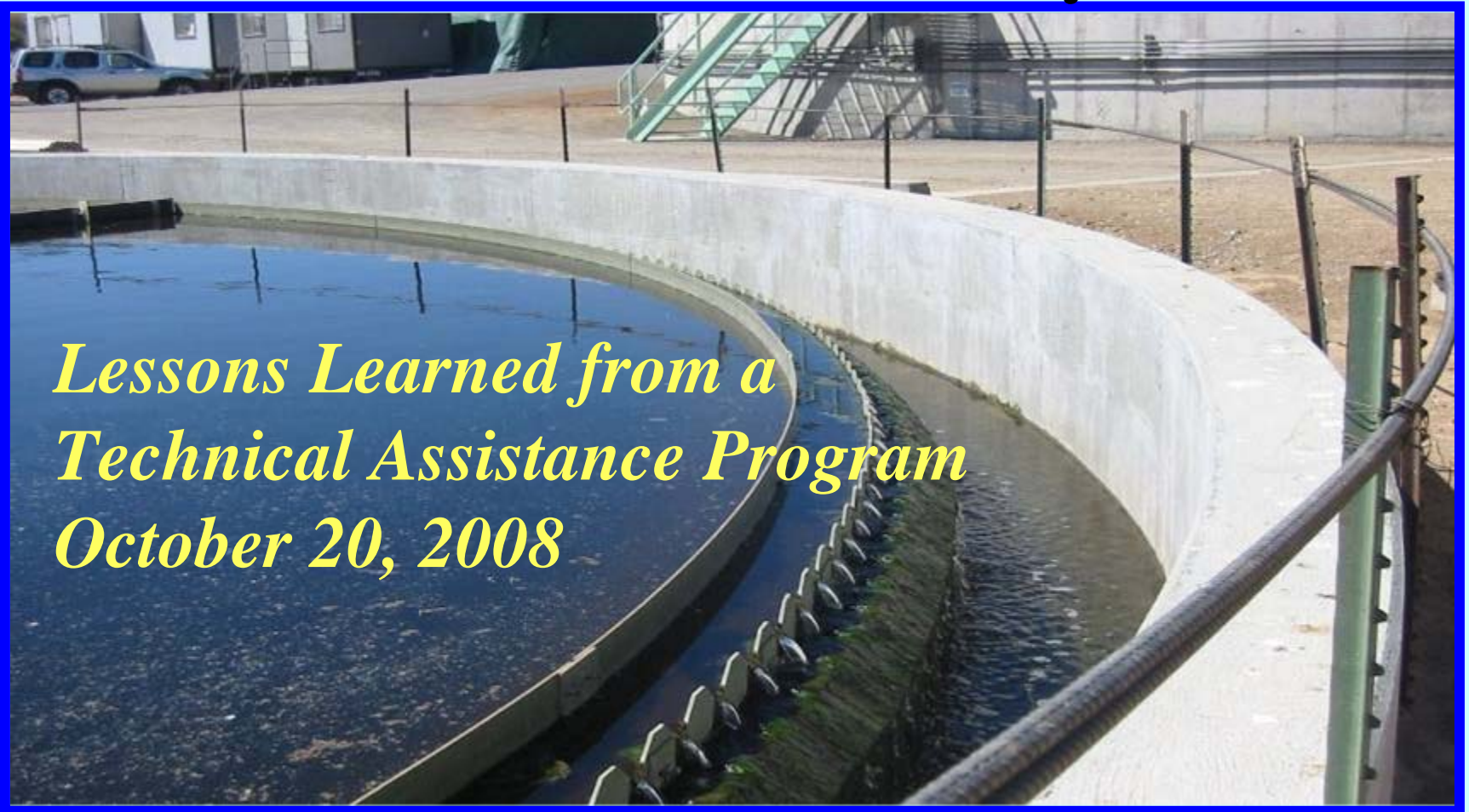


WIFA

Water Infrastructure Finance Authority
of Arizona

Providing Technical Assistance to the Small Community

*Lessons Learned from a
Technical Assistance Program
October 20, 2008*



TA Program Since FY 2000

- **Project Technical Assistance** – WIFA will assist an individual drinking water or wastewater system to conceive, plan, design, and develop infrastructure.
- **Policy Technical Assistance** – WIFA will develop and distribute guidance or perform related activities to benefit a wide range of drinking water and wastewater systems
- **Operational Technical Assistance** – The Arizona Department of Environmental Quality (ADEQ) will assist individual drinking water and wastewater systems to improve day-to-day operations.

Project Technical Assistance

To prepare communities for construction in circumstances where resources are limited.

To assist systems to achieve financial, legal, managerial and/or technical capacity.

- ◆ Up to \$35,000
- ◆ Local Match Required (25%, 50%, 75%)
- ◆ Pre-Design and Design Projects

Policy Technical Assistance

Publication Examples:

- Domestic Water Improvement District Formation Handbook
- Hiring an Engineering Firm Step-by-Step
- Arsenic Master Plan

Survey Examples:

- Water & Wastewater Residential Rate Survey
- 2007 Drinking Water Needs Survey
- 2008 Clean Watershed Needs Survey

Operational Technical Assistance

- ◆ Border Infrastructure Engineer

- ◆ ADEQ Capacity Development
 - System Evaluations
 - Vulnerability Assessments
 - O&M Packages

Program Funding Sources and Uses

Technical Assistance IUP 2008

	Clean Water Assistance	Drinking Water Assistance	Total
Funding Sources			
Capacity Development (10% PWSS)		\$75,000	\$75,000
Capacity Development (15% Local Assist)		\$650,000	\$650,000
Fees	\$635,000	\$10,000	\$645,000
Total Sources	\$635,000	\$735,000	\$1,370,000
Funding Uses			
Project Technical Assistance	\$350,000	\$500,000	\$850,000
Policy Technical Assistance			
Publications	\$10,000	\$10,000	\$20,000
Needs Survey	\$200,000		\$200,000
Operational Technical Assistance			
Border	\$75,000	\$75,000	\$150,000
ADEQ		\$150,000	\$150,000
Total Uses	\$635,000	\$735,000	\$1,370,000

Issues that come up...

Ranking and Awarding TA – applicants not ready

Project development and the Notice to Proceed –
cart before the horse

Private systems and consultant contribution – what if
they already have an engineer?

Consultants – lawyers, financial advisors or
engineers driving the process

Local match and the scope of work - documentation,
keeping the ratio, and sticking to the agreement.

Deadlines – how long do we have?

Dealing with issues past and present...

Closer ties with ADEQ, and other TA providers

Automation in the application ranking process

Tighter scopes of work before awarding grant

Better project management beginning to end

Grants must be spent down within 18 months of the award.

Changing the Rules of the Game in FY 2010

Ranking and Awarding on a quarterly basis
Tighten the focus on TMF Capacities
Funds disbursed directly to grant recipient
Local match standard 50%

New Scoring Criteria: TMF Score

Technical Capacity

- system keeps records of treatment plant operations including flows, chemicals added, dose rates, time of operation, and water quality performance tests
- system has a schedule for maintenance, repair and rehabilitation of all facilities
- system has a routine leak detection and repair program
- system has accurate maps of the distribution system
- system has a microbiological site sampling plan
- system has a Source Water Assessment Plan
- system has initiated or completed a wellhead protection plan

New Scoring Criteria: TMF Score

Managerial Capacity

- system has an O&M plan and manual to address site specific component replacement or repair protocols based on manufacturer's recommendations
- system has a Smart Growth Scorecard on file
- system has an emergency operation plan that has task-specific steps to perform in case of an emergency
- system has a plan to ensure compliance
- system has written job descriptions for all positions so that employees know their responsibilities
- system has written personnel policies
- system maintains a staffing and organizational chart that indicates reporting relationships of system personnel
- by-laws, resolutions and/or ordinances up to date
- system has established rules or policies defining customer responsibilities

New Scoring Criteria: TMF Score

Financial Capacity

- system revenues cover expenses
- system prepares an annual budget
- system reviews its rate structure annually
- system can provide monthly financial statements
- system can provide an annual audit

New Scoring Criteria: Sustainability Index

Water Re-Use & Conservation

- project will generate or utilize reclaimed water for direct re-use
- project will correct water loss issues
- system is actively engaged in water conservation program(s)

Energy Use & Conservation

- project will significantly improve system efficiency
- system employs significant alternative energy sources and/or co-generation efforts
- system has performed an Energy Audit

Green Practices

- system utilizes solid waste reduction alternatives
- project meets EPA “Green Building” practices

Technical Assistance Program

The Rural Water Infrastructure Committee (RWIC)

- Has been providing assistance to small, rural communities in Arizona since 1990.
- WIFA revived the RWIC in 2006 - www.rwic.az.gov
- Serves as a resource to navigate federal, state and local financial and technical assistance programs.

RWIC Partners

- ◆ Water Infrastructure Finance Authority of Arizona (WIFA)
- ◆ USDA Rural Development (USDA RD)
- ◆ Greater Arizona Development Authority (GADA)
- ◆ North American Development Bank (NADBank)
- ◆ Border Environment Cooperation Commission (BECC)
- ◆ Arizona Small Utilities Association (ASUA)
- ◆ Rural Community Assistance Corporation (RCAC)
- ◆ Arizona Water Association (AZWA)
- ◆ U.S Department of the Interior (Bureau of Reclamation)
- ◆ Inter-Tribal Council of Arizona (Tribal Water)
- ◆ Arizona Water Institute (State University System)

For more information, please contact

- ◆ **Judy Navarrete, Executive Director**
(602) 364-1323, JNavarrete@azwifa.gov
- ◆ **Sandy Sutton, Chief Financial Officer**
(602) 364-1314 ssutton@azwifa.gov
- ◆ **Jon Bernreuter, Environmental Program Supervisor**
(602) 364-1326, JBernreuter@azwifa.gov